

Veterinary models General Catalogue

2024

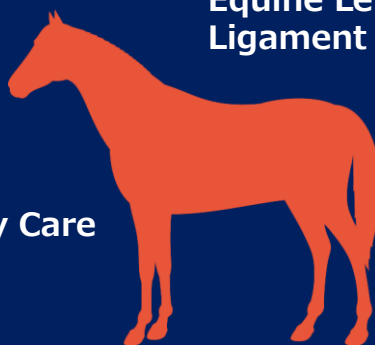
You can find your desire models

Bovine Incision and Suture pad



Newborn puppy Care Training model

Equine Left Forelimb Tendon Ligament model



Transparent Equine Bone Educational model Left and Right Forelimb

Equine Hoof model

Equine Cervical Spine model

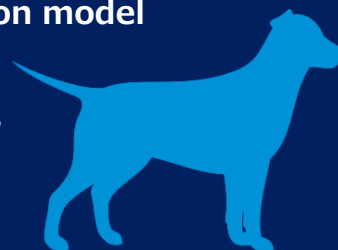
Microchip Insertion Training model

Canine Neuter Surgery Simulation model

Canine Spay Surgery Simulation model



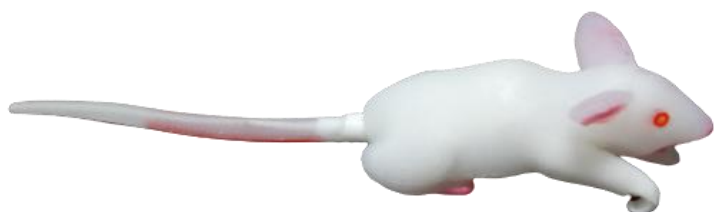
Injection Training model of Canine's Vena Cephalica



Mouse Simulation Model



Injection Training model of Feline's Vena Cephalica



 **Lustertech,inc.**

3F, Suncity bldg., 4-14-5, Gonokami,
Hamura-city, 2050011 JAPAN

<https://lustertech.jp>

Email: harumi@lustertech.jp

TEL:042-578-9725

FAX:042-578-9726



Item# : LMP-04

Bovine Incision&Suture Training Pad



It has two layers so that you can practice suturing the skin and dermis.

A pad specially developed using special silicone for practicing bovine skin incision and suture.

After practicing various incisions and sutures, you can repair it yourself and will use it multiple times with a repair kit included.

<Accessories>

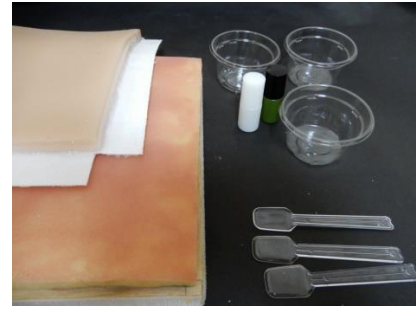
Outer skin x1, muscle layer x1, pedestal with wooden frame x1
Repair kit (A liquid x1, B liquid x1, cup x3, spoon x3)

Length 30cmx Width 18.5cm x Height 3cm



Item# : LMP-04-OP

Spare parts for Bovine Incision and Suture Training Pad



This option includes a skin and muscular layer to replace the frame and a set of repair materials.

It can be repaired 2-3 times.

Apply the repair liquid to the silicon and it will adhere in about 25 minutes.

(The wooden pedestal is reused.)

<Accessories>

Outer skin x1, muscle layer x1,
Repair kit (A liquid x1, B liquid x1, cup x3, spoon x3)



Item#:LMB-08

Equine Left Side Forelimb Tendon Ligament Model



For the bone parts, we used a real horse's left forelimb bone as the master and carefully and accurately replicated it.

It consists of the metacarpal, two proximal sesamoid bones, first phalanx, second phalanx, distal sesamoid, and third phalanx.



Weight : Approximately 900g

Length 40cm x Width 7cm x Height 8.5cm



For the ligament parts, the 24 ligaments and tendons are made of special silicone.

It can be attached by magnets and removable as the picture, helping to understand the anatomy. Comes with a stand for storage and display.

Watch the product movie



Item# : LMB-11

Equine Bone Educational model(Left Forelimb)



Item# : LMB-12

Equine Bone Educational model(Right)



You should indicate which one you want or both when you place an order.
This is a resin model that faithfully and accurately reproduces the actual bone.
It consists of 16 bones in total.

If you want to see a transparent model of this model, you can purchase LMB-09 and LMB-10 together so that you can expect even higher educational effects.



Item# : LMB-09

Transparent Equine Bone Educational model(Left Forelimb)



Item# : LMB-10

Transparent Equine Bone Educational model(Right Forelimb)



This is a resin model that faithfully and accurately reproduces the actual bone.
It consists of 16 bones in total.

This model was cast and polished by hand in 22 steps to make it transparent and visible from all angles.
We prioritized smoothing the refraction of light and increasing transparency rather than reproducing details.
This allows us to maintain beautiful transparency.

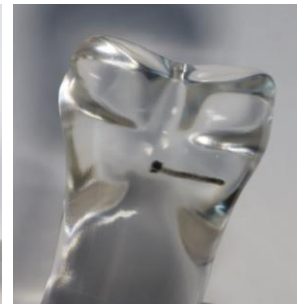
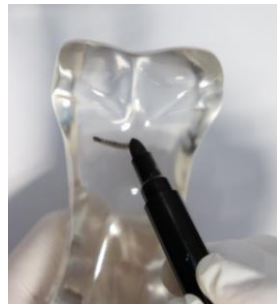
Depending on your ideas, you can teach various information, such as drawing fracture lines with a whiteboard pen.
It can be erased easily.

It's also excellent in terms of form.

If you want to see details, we have replica models of these bones(LMB-11 and LMB-12, see above).

If you purchase LMB-09 and LMB-10 together, you can expect even higher educational effects.

This product is all handmade, so the shape may vary from piece to piece.



Watch the product movie



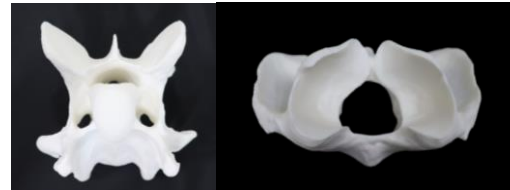
Item# : LMB-15

Equine Cervical Spine model



This is a resin model that is an elaborate reproduction using a real horse's cervical vertebrae as a master.

- The models are not connected
- It made by hand



Item# : LMB-07

Equine Left Side Forelimb Bone model



This is a detailed replica using a real horse's forelimb bone as the master.

It consists of a metacarpal, two proximal sesamoid bones, the first phalanx, the second phalanx, the distal sesamoid bone, and the third phalanx.



Item# : LMB-13

Equine Hoof model



This resin model is an elaborate reproduction using a real horse's hoof as a master. The epidermal leaves are faithfully reproduced.

- Faithfully and accurately reproduces the hoof
- Use real hoof as master
- made by hand
- Reproduction of epidermal leaves

The epidermal leaves are clearly visible.



Front View

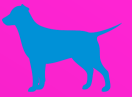


Bottom View



Upper View





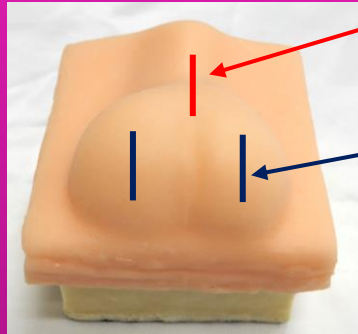
Item# : LMSS-07

Canine Neuter Surgery Simulation model



This is a simulation model for mastering Canine Neuter surgery. It is possible to simulate skin incisions, heronotomy, ligation and cutting of the vas deferens and arteries and veins, excision of testicles, and suturing.

Techniques using a midline skin incision and a technique using a skin incision in the center of the scrotum are possible. This model is now a cartridge type, so only the contents can be replaced and achieved cost reduction.



A midline skin incision can be made

A skin incision can be made in the center of the scrotum.



Watch a video of incising the sheath membrane.



Weight : Approximately 345g
Length 11cm x Width 11cm x Height 8cm



Item# : LMSS-07-OP

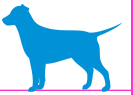
Spare Parts for Canine Neuter Surgery Simulation model



Put it in the case LMSS-07 Canine Neuter Surgery Simulation model when you use it.

Weight : Approximately 188g Length 9cm x Width 9cm x Height 7.5cm





Item# : LMSS-03

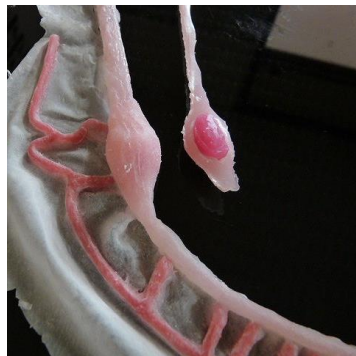
Canine Spay Surgery Simulation model



This simulation model is to master Canine Spay Surgery.

You can learn skin dissection, peritonea dissection, cutting, and suture with this model.

The parts that seem to be anatomically important such as costal bone, xiphisternum, pubis, medial white line are expressed in the model.



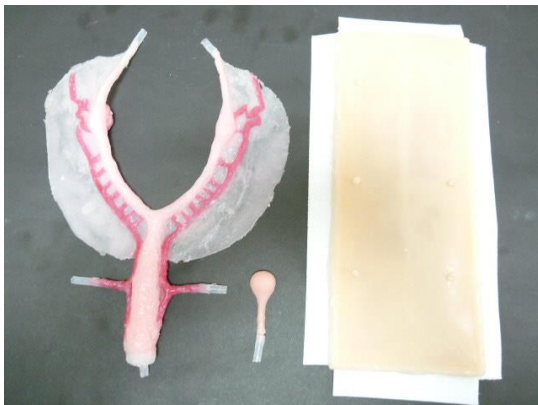
Weight : 1,327g

Length 29cm x Width 12.5cm x Height 6.3cm



Item# : LMSS-03-OP

Spare Parts for Canine Spay Surgery Simulation model



The genitals and the skin can be easily attached.

The case of LMSS-03 can be reused so it enables cost-cutting.

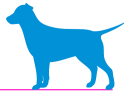
<Contents of replacement parts >

Skin set x 1, genitals x 1, bladder x 1



Item# : LMI-01

Injection Training Model of Canine's Vena Cephalica



It is possible to apply pressure to the blood vessel by putting water in the syringe and pressing the pusher (plunger).
 By pressing the pusher (plunger) rhythmically, you can reproduce the feeling of pulsation (engorgement).
 You can press the stopper attached to the tube and pressurize it.
 The wrist can be bent.
 It is a model that can be practiced by two people (one of them holds a restraint) or one person.



<Accessories>

Forelimb body x 1, outer skin x 1, blood vessel x 1, wire x 1, tube stopper x 2, injection syringe x 1, replacement outer skin x 1, replacement blood vessel x 1

Length 31cm x Width 7cm x Height 6cm

Weight : Approximately 512g



Item# : LMI-03

Injection Training Model of Small dog's Vena Cephalica



It is possible to apply pressure to the blood vessel by putting water in the syringe and pressing the pusher (plunger).
 By pressing the pusher (plunger) rhythmically, you can reproduce the feeling of pulsation (engorgement).
 You can press the stopper attached to the tube and pressurize it.
 The wrist can be bent.
 It is a model that can be practiced by two people (one of them holds a restraint) or one person.



<Accessories>

Forelimb body x 1, outer skin x 1, blood vessel x 1, wire x 1, tube stopper x 2, injection syringe x 1, replacement outer skin x 1, replacement blood vessel x 1

Length 20cm x Width 2.5cm x Height 3cm

Weight : Approximately 158g



Item# : LMI-01-OP

Replacement Parts for Injection Training Model of Canine's Vena Cephalica



This is a Replacement parts for LMI-01 Injection Training Model of Canine's Vena cephalica. Training for 10 people is possible and it enables cost-cutting.



<Accessories>

Replacement skin x 1 , replacement blood vessel x 10

Item# : LMI-03-OP

Replacement Parts for Injection Training Model of Small dog's Vena Cephalica



This is a Replacement parts for LMI-03 Injection Training Model of Small dog's Vena cephalica. Training for 10 people is possible and it enables cost-cutting.



<Accessories>

Replacement skin x 1 , replacement blood vessel x 10

Item# : LMB-01

Canine Cranial Bone model



This is a highly accurate model made in Japan, created using the actual dog skull as a master. It is suitable for observation of occlusal surfaces of the upper and lower jaws and temporomandibular joints.

It is also appropriated for teaching in classes and informed consent. A special acrylic stand comes with so that it can be displayed in the examination room or on the desk.



Adult canine with all teeth
Comes with a stand for display
Weight: Approximately 236g
Length 15.9cm x Width 9.2cm x Height 8.7cm



Item# : LMB-06

Chihuahua Cranial Bone model



This is a highly accurate model made in Japan, created using the actual dog skull as a master. It is suitable for observation of occlusal surfaces of the upper and lower jaws and temporomandibular joints.

It is also appropriated for teaching in classes and informed consent. A special acrylic stand comes with so that it can be displayed in the examination room or on the desk.

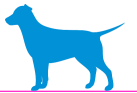


Adult Chihuahua with all teeth, malocclusion
Comes with a stand for display
Weight: Approximately 88g
Length 10cm x Width 7cm x Height 5cm



Item# : LMT-01

Newborn Puppy Care Training model



It enables to care newborn puppy without using living puppy.



[Product material] Specialty Silicone



※ If you provide condoms, it is possible to reproduce the amniotic membrane and allantoic membrane as shown on the left.

<Features>

Comes with umbilical cord and placenta.
The umbilical cord can be easily removed.



Item# : LMB-03

Canine Forelimb Bones model



A resin model of a dog's forelimbs. Comes with a special acrylic decorative stand. The bones can be removed from the stand.

Weight: Approximately 324g
Length 29cm x Width 20cm



Item# : LMB-04

Canine Hindlimb Bones model



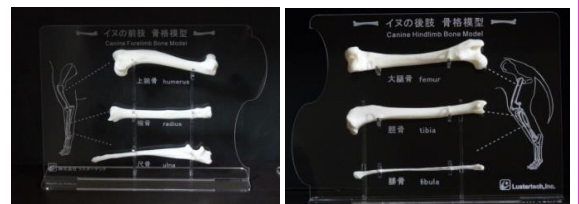
A resin model of a dog's hindlimbs. Comes with a special acrylic decorative stand. The bones can be removed from the stand.

Weight: Approximately 324g
Length 29cm x Width 20cm



Item# : LMB-05

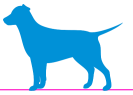
Canine Forelimb and Hindlimb Bones model Set



Resin models of dog's forelimb and hindlimbs. Comes with a special acrylic decorative stand. The bones can be removed from the stand. It's cheaper than buying the front and hind legs separately.

Weight : Approximately 324g x 2
Length 29cm x Width 20cm x 2





Item# : LMSS-01

Canine Patellar Joint Surgery Simulation model



This is a precise model that anatomically faithfully reproduces hard tissues such as the trochlea, gastrocnemius muscle capitulum, and patella.

The soft tissue area is incised using a special silicone resin. You can practice suturing, and in hard tissue areas you can create grooves into the pulley.

In particular, the lateral gastrocnemius muscle capitulum and the articular surface.

Consideration is given to learning the technique of threading support threads.



Length 21.5cm x With 15cm x Height 7cm

Weight: Approximately 865g

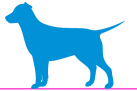


Lustertech, Inc.

Made in Tokyo

Item# : LMB-C01

Canine Cranial Bone Color model



This is a highly accurate model made in Japan, created using the actual dog skull as a master.

By color-coded individual bones, you can observe the bone structure of the skull.

It is suitable for observation of occlusal surfaces of the upper and lower jaws and temporomandibular joints.

It is also appropriated for teaching in classes and informed consent.

A special acrylic stand comes with so that it can be displayed in the examination room or on the desk.

Adult canine with all teeth
Comes with a stand for display
Weight: Approximately 236g

Length 15.9cm x Width 9.2cm x Height 8.7cm



Lustertech, Inc.

Made in Tokyo, JAPAN



Item# : LMT-02

Microchip Insertion Training model



Appearance



Removed outer skin and body



You can grab the back of the neck

- Palpate anatomical landmarks to learn the correct microchip insertion location
- It is possible to practice repeatedly
- If the epidermis becomes full of holes, you can purchase a replacement epidermis separately and replace it.(Product number: LMT-02-OP)
- You can easily change the skin with snap buttons.

[Product material] Main body: Specially processed hard urethane foam
Outer skin: Special silicone processing on fake fur fabric

Length 285mm x width 130mm x height:1 00mm

Weight: 209g

【Country of origin】 Tokyo, Japan



Item# : LMT-02-OP

Replacement skin for Microchip Insertion Training model



Product number: LMT-02 If the epidermis of the microchip insertion training model deteriorates due to use, only the epidermis can be purchased.

Product material: Special silicone processing on fake fur fabric

Weight: 76g

【Country of origin】 Tokyo, Japan



Item# : LMT-03

Tumor Palpation Training model



Appearance



- Learn the sensations of tumor palpation from beginner to advanced level.
- Five types of tumors with a thickness of 3mm: 5mm, 10mm, 15mm, 20mm, 25mm
- Three types of tumors with a thickness of 8 mm: 10 mm (soft), 10 mm (hard), and 15 mm (soft)
- Tumors can be easily placed anywhere and covered with epidermis
- This model has a built-in convenient tumor storage case.
- You can train to palpate tumors of various sizes.

Tumor Set comes in a case



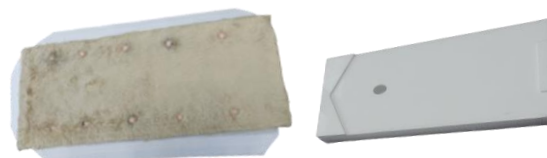
Length 295mm x Width 123mm x Height 40mm

Weight 545g

[Product material]

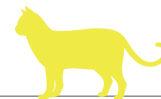
Body: Acrylic resin Tumor: Silicone resin, etc.

Outer layer: Special silicone treatment on fake fur fabric



After removing the epidermis





Item# : LMI-02

Injection Training Model of Feline's Vena Cephalica



It is possible to apply pressure to the blood vessel by putting water in the syringe and pressing the pusher (plunger).
 By pressing the pusher (plunger) rhythmically, you can reproduce the feeling of pulsation (engorgement).
 You can press the stopper attached to the tube to close it and pressurize it.
 The wrist can be bent.
 It is a model that can be practiced by two people (one of them holds a restraint) or one person.

Length 24cm x Width 4cm x Height 3cm
 Weight : Approximately 158g



<Accessories>

Forelimb body x 1, outer skin x 1, blood vessel x 1, wire x 1,
 tube stopper x 2, injection syringe x 1,
 replacement outer skin x 1, replacement blood vessel x 1



Item# : LMI-02-OP

Replacement Parts for Injection Training Model of Feline's Vena Cephalica



This set is the Replacement parts for LMI-02 "Injection model of feline's vena cephalica".
 This set comes with 10 tubes that imitate blood vessels and can train 10 people so you can reduce costs.

Replacement parts contents:
 Outer skin x1 , blood vessel tube x10



Item# : LMSS-06

Feline Tracheal Intubation Training model



If the trachea is correctly intubated, the blue light will illuminate; if the esophagus is incorrectly intubated, the red light will flash.
 You can move your jaw and eyelids with your hands.



Watch the product's movie clip



Please use a catheter with a diameter of 6mm or less.



<accessories>
 AA batteries x2

Length 13cm x Width 10cm x Height 23cm



Item# : LMB-02

Feline Cranial Bone model

This is a highly accurate model made in Japan, created using the actual cat skull as a master.

It is suitable for observation of occlusal surfaces of the upper and lower jaws and temporomandibular joints.

It is also appropriated for teaching in classes and informed consent.

A special acrylic stand comes with so that it can be displayed in the examination room or on the desk.



Adult feline with all teeth
 Comes with a stand for display
 Weight: Approximately 74g
 Length 9.4cm x Width 7.4cm x Height 5cm





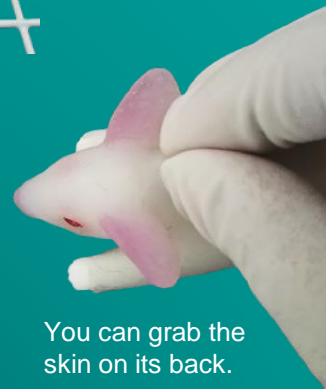
This is a life-size model based on a 7-week-old BALB/C with upper front teeth.



The skin is made of soft silicone and the bones are made of hard resin.



When the tail is pulled, the forelimbs grab the cage.



You can grab the skin on its back.

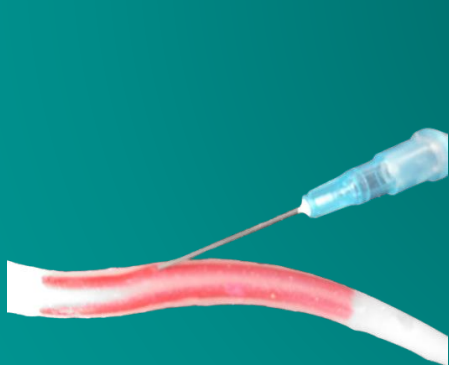
【8 Features】

- ① Tail vein injection is possible.
- ② Reproduce two tail veins.
- ③ When the tail is pulled, the forelimbs grab the cage.
- ④ Feeding training using a feeding needle is possible
- ⑤ Can be administered intraperitoneally.
- ⑥ You can grab the skin on its back.
- ⑦ Subcutaneous injection is possible.
- ⑧ Tail can be easily replaced.



Tail vein injection is possible

Watch the product movie clip

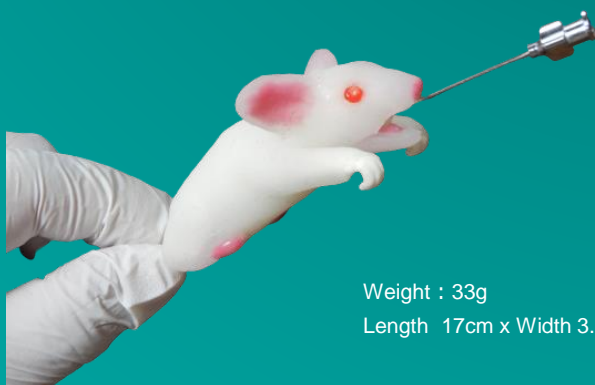


Can be injected subcutaneously



Tail is easily replaceable.

Reproduces two tail veins that can be injected.



Feeding training using a Feeding needle is possible.

Weight : 33g
Length 17cm x Width 3.5 cm x Height 3 cm



Item# : LMSS-05-OP

Replacement Tails for Mouse Simulation model

This set is a replacement tails for Item#:LMSS-05 "Mouse simulation model". You can exchange it easily.

This set includes tails x 3



Item# : LMP-01

Incision/Suture Training Pad (large)



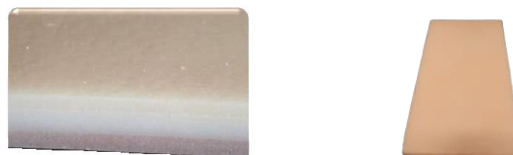
All silicone pad for practicing incision and suture.
As it is color-coded into 3 layers, it is ideal for practicing incisions and suture.
We have two pad sizes, large pad and small pad.
This item is large size, three times the size of small.

Weight 466g
Length 28.5cm x Width 18cm x Thick 0.7cm



Item# : LMP-02

Incision/Suture Training Pad (small)



This is one-third the size of Item#:LMP-01” Incision/Suture Training Pad(large) ”.
We have two pad sizes, large pad and small pad.
This item is small size, one-third the size of large.

Weight 148g
Length 18cm x Width 9.5cm x Thick 0.7cm



Item# : LMP-05

Enteroanastomosis Training model



This is a special silicone model developed to practice Enteroanastomosis.
Color-coded for mucosal and muscular layers, enabling blunt separation.
With a soft texture as if it was real, it is ideal for improving Enteroanastomosis skills.

Length 18cm x Diameter 3cm



Item# : LMP-07

Small animal Enteroanastomosis Training model



This is a special silicone model developed to practice Enteroanastomosis.
Color-coded for mucosal and muscular layers, you can cut and suture and do blunt separation.
With a soft texture as if it was real, it is ideal for improving Enteroanastomosis skills.
The model is attached with mesenterium and vessel.
This product is thinner and softer than LMP-05.
A feeding vessel and mesentery are attached, allowing for more practical training.

Length 18cm x Diameter 2.5cm



Item# : LMP-06

Suturing Training Pad Advanced



Suture example

This pad is specialized in sutures that enables training of various shapes of sutures from basic to advanced.
It consists two-layer structure, dermal layer and subcutaneous tissue.
You can do training of subcutaneous suture on defect parts.
Can be used from beginners to advanced.
You can learn suturing in three dimensions.

Weight 466g
Length 12cm x Width 19.5cm x Height 10mm



Item# : LMP-03

Injection Training Pad



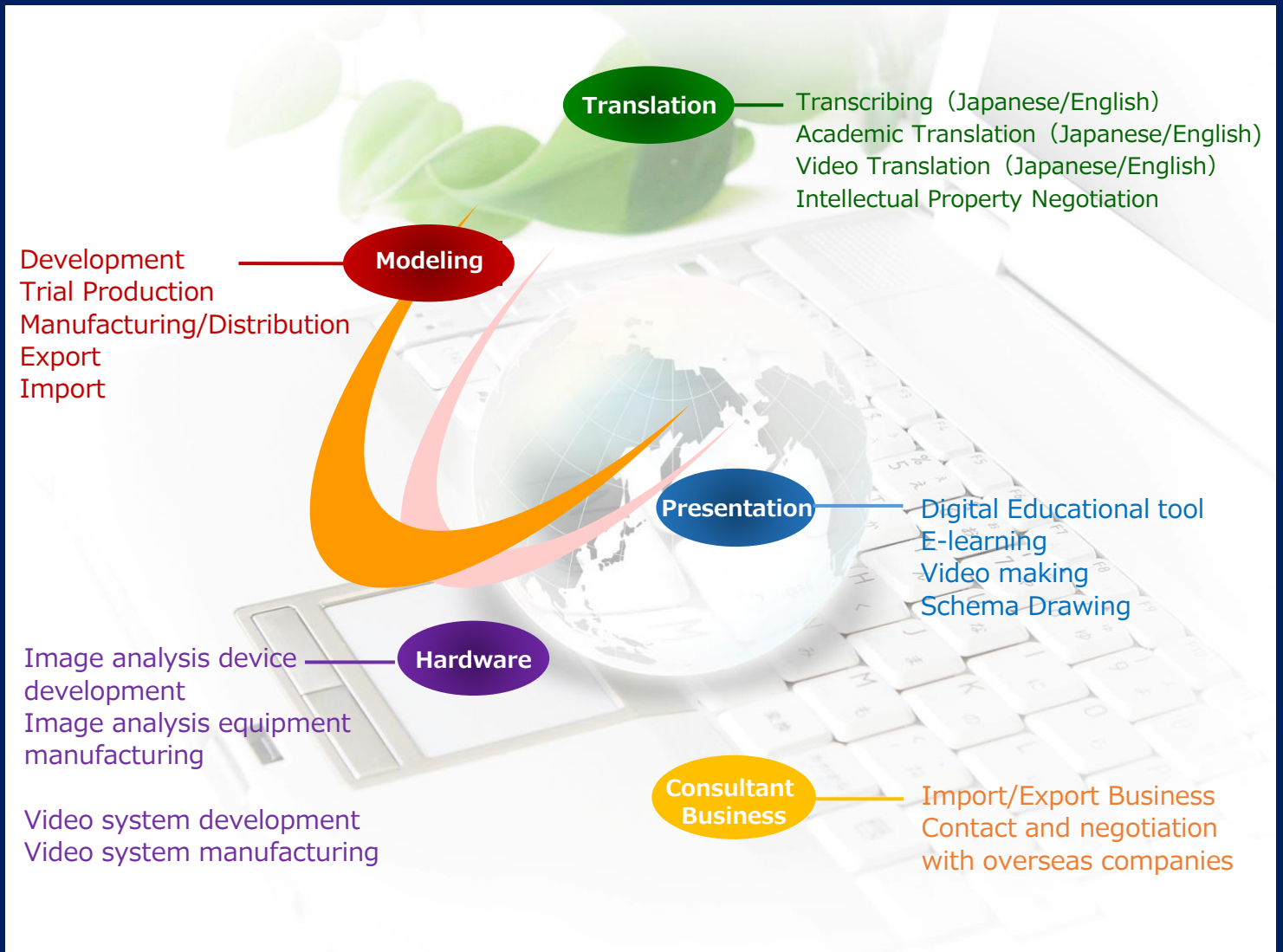
It is possible to practice injections into blood vessels that imitate Y-shaped, S-shaped and linear shapes.
The lumen of blood vessels is approximately 1 mm.
By practicing with putting air, water, etc. in the blood vessel, you can learn the feeling that a good injection can be made.

Weight 178g
Length 14cm x Width 11cm x Height 10m



About Us

We provide "understandable and useful information" in the fields of veterinary medicine, medicine, and dentistry.



We also accept requests for trial production of models, or if you want us to develop your ideal model, feel free to contact us. We can make your ideas a reality. We have many achievements.

<https://lustertech.jp>



We are ready to talk with you via remote meeting!

If you want to have a remote meeting, please email to harumi@lustertech.jp



Business hours : 09 : 00~18 : 00(weekday only)

 **Lustertech, Inc.**

<https://lustertech.jp>
Mail: harumi@lustertech.jp

TEL: 042-578-9725

FAX:042-578-9726

3F,Suncity bldg., 4-14-5, Gonokami, Hamura-city,
Tokyo 2050011 JAPAN